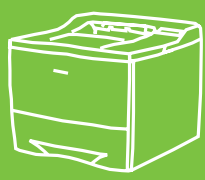




DigitAll *wireless*

Wireless enabled



One-touch duplex printing

The new wireless enabled printers
ML-2150, ML-2151N and ML-2152W

SAMSUNG DIGIT*all*
everyone's invited™
www.samsungprinter.com

Unplug in style with the new wireless enabled printer range from Samsung. Featuring high performance with the latest cost saving features, the ML-2150, ML-2151N and ML-2152W models offer an ideal solution for your workgroup printing needs.



WIRELESS NETWORK



DUPLEX PRINT BUTTON



SAVE TONER BUTTON

Outstanding Performance

The enhanced capabilities of the ML-2150, ML-2151N and ML-2152W give you the advanced digital performance to upgrade your business.

- Wireless LAN (802.11b) printing : Find another use for all those old printer cables, because now you won't need them any more.
- Ultra-fast interface : the standard USB 2.0 port means you can say goodbye to all those annoying bottlenecks between PC and printer.
- Print speed (A4) : at 20 pages per minute your volume printing tasks are ready in no time.
- Resolution : crisp image reproduction with 1200 dpi resolution.
- Increased paper capacity : 600 sheets as standard, with an optional 500 sheet second cassette.

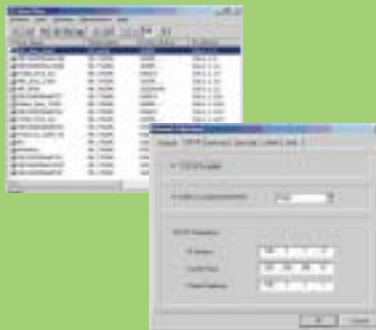
Advanced Digital Capability

The Samsung ML-2150, ML2151N and ML-2152W printers are packed with technological innovations designed to save you time and paper, add extra convenience and increase your business productivity.

- One-touch duplex printing : this convenient feature lets you create double-sided print-outs at the touch of a button. (Duplex printing via driver setting is also available.)

Solid Network Solution

- Wireless Network : Networkable via an Ethernet 10/100 Base TX network adapter or a combination of 10/100 Base TX and 802.11b wireless NIC, either as options or standard configuration.
- SyncThru : Samsung's remote printer management software tool that enables you to install, control and manage Samsung network printers on your network, included as standard.



Economical Features

Our printers are not only competitively priced, they also have built-in features to save you even more money over time.

- Toner save button : allows you to save up to 40 % of your toner so you can replace your cartridges less frequently and save money while still producing high quality prints.
- Paper saving : lets you create reduced sized copies (2-up, 4-up, maximum 16-up) on one page. (Paper saving via duplex printing is also available.)

Maximum Compatibility

- Various OS System Support : ML-2150, ML-2151N and ML-2152W are compatible with a wide range of operating systems including Windows, Linux and Macintosh, as well as SUN Solaris, HP-UX and SCO Unix.

802.11b

WIRELESS NETWORK

Network solution : wireless LAN (ML-2152W) and 10/100 base TX

LCD

Easy operation :
large, clear LCD display

DUPLEX PRINT BUTTON



Duplex

Easy duplex printing:
one-touch duplex
print button

Fast print speed (A4) :
20 pages/minute



Memory :
16 MB (expandable to 144 MB)

Dual Interface :
ultra fast USB 2.0 and
IEEE1284 dual ports.



Toner save

SAVE BUTTON

Cost saving :
one-touch 40% toner saving

- Easy driver installation : with only 4 clicks, you're ready to use your printer without having to shut down and restart your PC, so you're faster than the competition.

The ML-2150, ML-2151N and ML-2152W wireless enabled printers are the better way to manage your network printing needs, without all those annoying cables. We call that **DigitAll wireless** from Samsung.

SAMSUNG DIGITall
everyone's invited™

www.samsungprinter.com

Design and Specifications are subject to change without notice. Trademarks of other companies mentioned in these publications are hereby recognized and acknowledged.

		ML-2150	ML-2151N	ML-2152W
PRINT	Speed(A4)	20 ppm	20 ppm	20 ppm
	Resolution	1200 dpi	1200 dpi	1200 dpi
	Processor	Samsung 166 MHz	Samsung 166 MHz	Samsung 166 MHz
	RAM (Std)	16 MB	16 MB	16 MB
	RAM (Max)	144 MB	144 MB	144 MB
	Monthly Duty Cycle	100,000 Pages	100,000 Pages	100,000 Pages
	Emulation (Standard)	PCL6, IBM ProPrinter, Epson	PCL6, PostScript3, IBM ProPrinter, Epson	PCL6, PostScript3, IBM ProPrinter, Epson
	Emulation (Optional)	PostScript 3	–	–
	Resident Fonts	45 Scalable, 1 Bitmap	45 Scalable, 1 Bitmap, 136 PS 3 Fonts	45 Scalable, 1 Bitmap, 136 PS 3 Fonts
NETWORK	Standard Interface	IEEE1284 Parallel, USB 2.0	IEEE1284 Parallel, USB 2.0, 10/100 Base TX	IEEE1284 Parallel, USB 2.0, 10/100 Base TX+ 802.11b Wireless LAN
	Optional Interface	10/100 Base TX, 10/100 Base TX + 802.11b Wireless LAN	10/100 Base TX + 802.11b Wireless LAN	– –
PAPER HANDLING	Paper Input	500-sheet Cassette 100-sheet Multi-purpose Feeder	500-sheet Cassette 100-sheet Multi-purpose Feeder	500-sheet Cassette 100-sheet Multi-purpose Feeder
	Optional Paper Input	500-sheet Cassette	500-sheet Cassette	500-sheet Cassette
	Paper Output	250 Sheets Face Down, 100 Sheets Face Up	250 Sheets Face Down, 100 Sheets Face Up	250 Sheets Face Down, 100 Sheets Face Up
	Paper Sizes	Letter, Legal, Folio, Executive, Monarch, COM10, C5, DL, A4, A5, B5, 3" x 5"	Letter, Legal, Folio, Executive, Monarch, COM10, C5, DL, A4, A5, B5, 3" x 5"	Letter, Legal, Folio, Executive, Monarch, COM10, C5, DL, A4, A5, B5, 3" x 5"
	Special Media	Transparency, Labels, Post Card, Envelope	Transparency, Labels, Post Card, Envelope	Transparency, Labels, Post Card, Envelope
	OS	Compatibility	Win 9x, NT 4.0, Me, 2000, XP; Linux, Mac OS 8.6 or higher, SUN Solaris, HP-UX, SCO Unix	Win 9x, NT 4.0, Me, 2000, XP; Linux, Mac OS 8.6 or higher, SUN Solaris, HP-UX, SCO Unix
GENERAL	Dimensions (WxDxH)	386 x 436 x 326 mm	386 x 436 x 326 mm	386 x 436 x 326 mm
	Weight	13.5 kg (29.8 lbs.)	13.5 kg (29.8 lbs.)	13.5 kg (29.8 lbs.)
CONSUMABLES	Type	Single Cartridge	Single Cartridge	Single Cartridge
	Yield	8,000 Sheets @ IDC 5% Coverage (Starter 4,000 Sheets)	8,000 Sheets @ IDC 5% Coverage (Starter 4,000 Sheets)	8,000 Sheets @ IDC 5% Coverage (Starter 4,000 Sheets)

Distributed by